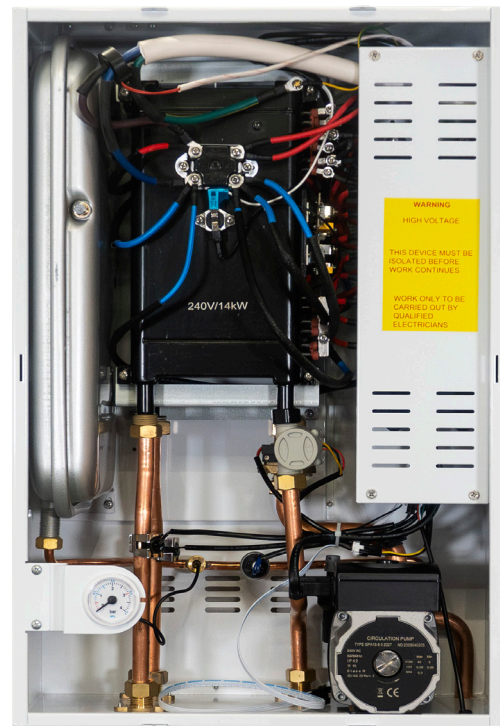
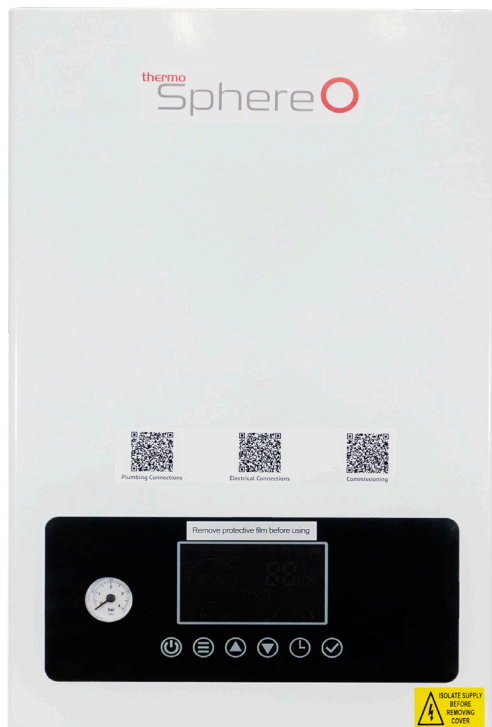


Flex Electric Combi Boiler



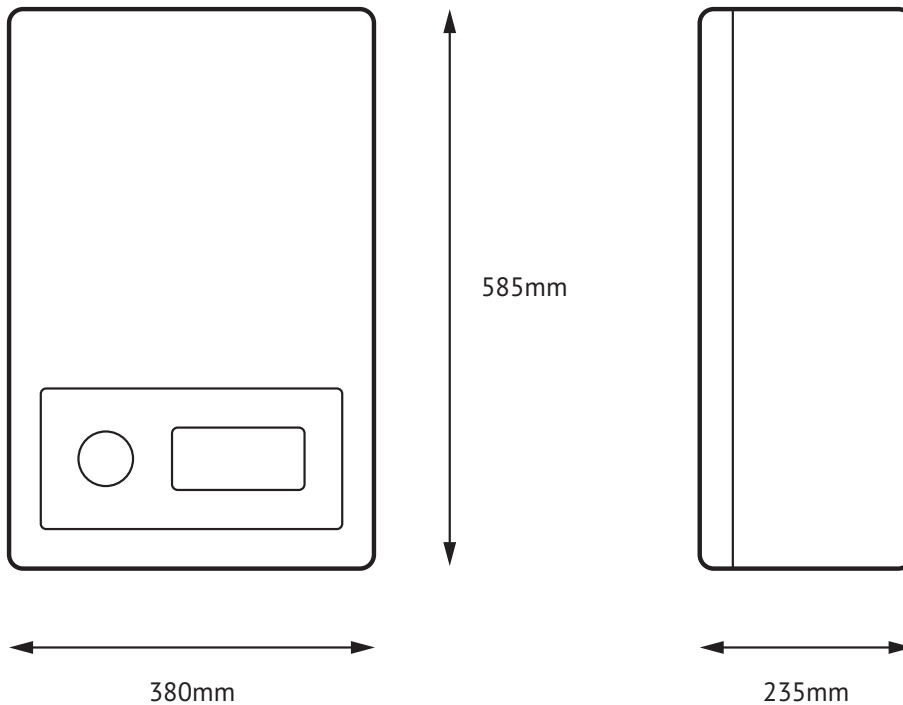
ThermoSphere Flex Electric Combi Boiler provides direct hot water for showers and taps as well as heat for radiators, underfloor heating and skirting heating systems.

- Flex - digitally adjustable power output settings for both heating and hot water.
- Pre-wired with 10mm cable and pre-plumbed with integrated pump and expansion vessel to make installation quick and easy.
- Works with external volt free controls.
- Direct hot water - no cylinder required.
- Digital timer and temperature control.
- Perfect for homes without a gas supply or where space is at a premium.
- No burning of fossil fuels directly, meaning zero carbon emissions - no flue needed.
- No mandatory servicing and minimal maintenance costs.

Technical data

Code	TSFLEX14
Voltage	230V Single Phase 50Hz
Recommended MCB	63 Amp
Heat output flex	4 to 14kW
DHW output flex	10 to 14kW
Working temperature	30 - 80°C
Max pressure	1.5 bar
Expansion vessel	5L (integrated)
DHW flow rate	6 L/M (14kW at ΔT 30°C)
ERP rating	DHW A Heating D
Dimensions	585 x 380 x 235mm
Protection	IPX1
Country of origin	China
Warranty	5 years

Dimensions



Installation kit (sold separately)

Extra 2 years warranty when fitted with a ThermoSphere installation kit and registered online.



Sentinel Vortex 250
Magnetic filter



WRAS Approved Filling
Loop



Sentinel X300 System
Cleaner



Automatic Bypass
Valve



Sentinel X100
Inhibitor



2 x 1/2" Isolation Valves
2 x 3/4" Isolation Valves



EPH Wireless
Combi Control
Pack 4



Caleffi Flow valve
5ltr/min