

thermo
Sphere 

Vertical Towel Bar

Beautifully simple to install



Leading the charge for **electric heating**

Contents

2	Technical specifications
3	Flat bar installation
4	Installing your flat towel bar
6	Wiring connections - Flat
7	Round bar installation
8	Installing your towel bar
11	Wiring connections - Round
12	Safety information
13	Warranty
14	Available models

Technical Specifications

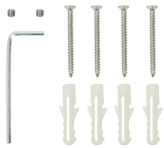
Technical data

Voltage	12V SELV
Material	304 Stainless Steel
Output	20 - 30W
Cable length	2m
Wiring connection	Concealed
IP rating	IP55 or IP65 (230V only)
Warranty	5 years

Flat bar Installation

Check you've got everything

- 1x Vertical Towel Bar
- 1x 2m power lead (attached)
- 2x Mounting brackets
- 4x Wall plugs
- 4x Countersunk screws
- 2x Grub screws
- 1x Allen key



Installing your flat towel bar



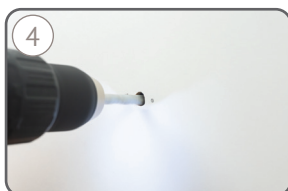
1 Select a location in which to install your towel bar(s).



2 Measure and mark the fixing centres (800mm).



3 Remove the mounting brackets from the towel bar and hold one in place. Mark the fixing holes for the top bracket.



4 Mark the fixing and the cable holes for the bottom bracket. Drill a 10mm hole for the cable.

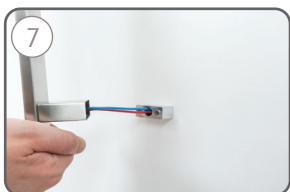


5 Fix the brackets in place using suitable fixings for your wall type.



6 Ensure the brackets are installed level, aligned and positioned at the correct centres.

Fixing towel bars to plasterboard walls is not recommended. Select fixings that will hold the weight of the towel bar and a wet towel.



7
Feed the power cables through the bracket, hole and into the wall cavity and through to the wiring point.



8
Offer the towel bar up to the bottom mounting bracket.



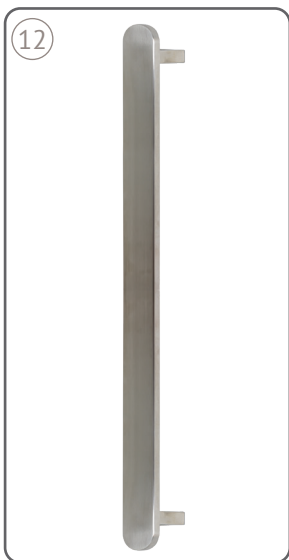
9
Offer the towel bar up to the top mounting bracket and push into position.



10
Use an allen key to tighten the grub screw on the top bracket.



11
Tighten the grub screw on the bottom bracket. The towel bar should now be held securely in place.



Wiring connections

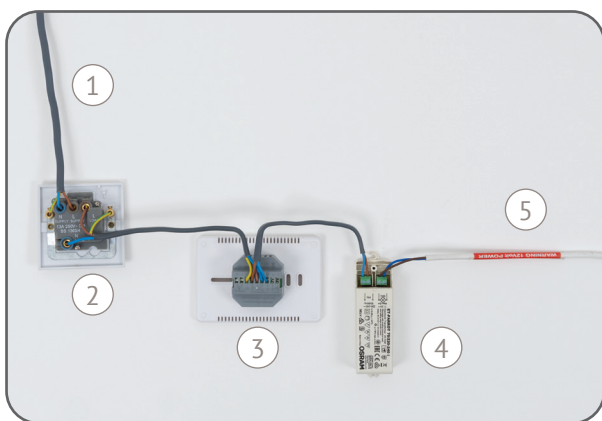
ThermoSphere Vertical Towel Bars operate on 12V AC and must never be connected directly to 230V mains supply.

Ensure that the electrical circuit is safely isolated before carrying out any electrical work.

The wiring example below shows:

1. 230V RCD protected supply.
2. Fused spur with suitably rated fuse - to provide a fuse and isolation point.
3. ThermoSphere Dual Control Thermostat - to provide a timer switch and boost control for the towel bar.
4. Suitably rated 12V transformer - to step down the 230V supply to 12V.
5. 12V power cable to the towel bar.

The transformer must be installed in an accessible area to allow maintenance and replacement if required.

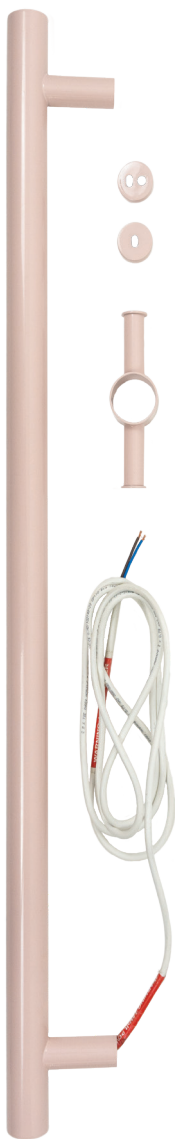


Maximum distance from the towel bar to the transformer is 2m.

The power lead must not be extended as this will reduce the performance of the towel bar.

Multiple towel bars must be wired in parallel. Do not exceed the rated output of your transformer.

Round/Square bar Installation



Check you've got everything

- 1x Vertical Towel Bar
- 1x 2m power lead (attached)
- 1x Wired mounting bracket
- 1x Non-wired mounting bracket
- 2x Wall plugs
- 2x Countersunk screws
- 2x Grub screws
- 2x Allen key
- 1x Optional hook (with grub screw)



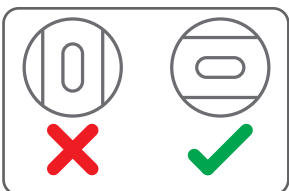
Installing your towel bar



1 Select a location in which to install your towel bar(s) and measure and mark the fixing centres (785mm).



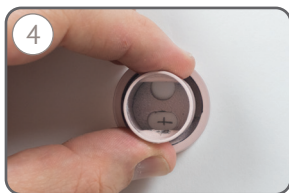
2 Hold the non-wired mounting bracket over the top mark.



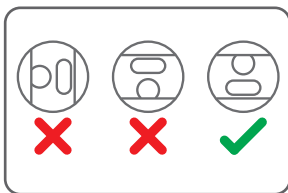
Make sure the fixing hole is horizontal as shown.



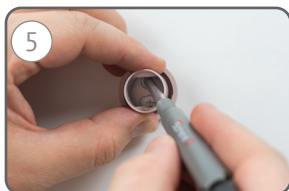
3 Fix the bracket in place using suitable fixings for your wall type.



4 Hold the wired mounting bracket (with cable hole) in place over the bottom mark.



Make sure the fixing hole is horizontal and the cable hole is above the fixing mark.



5 Mark the cable hole.



8 Your marks should look like this.



Use a 10mm bit to drill a hole in the wall. This will be used to feed the cable into the wall cavity to the wiring point.



Make sure the round hole in the bracket aligns with the hole you drilled in the wall. Fix the bracket in place with fixings that are suitable for your wall type.



Feed the power cable through the bracket, hole and into the wall cavity and through to the wiring point.



Offer the towel bar up to the bottom mounting bracket.



Offer the towel bar up to the top mounting bracket and push into position at the top and bottom.



Use an Allen key to tighten the grub screw on the top bracket.



Tighten the grub screw on the bottom bracket. The towel bar should now be held securely in place.

Fixing towel bars to plasterboard walls is not recommended. Select fixings that will hold the weight of the towel bar and a wet towel.

14



15



The robe hook is optional and can be secured in place with the grub screw at the back.

Wiring connections - Round/square

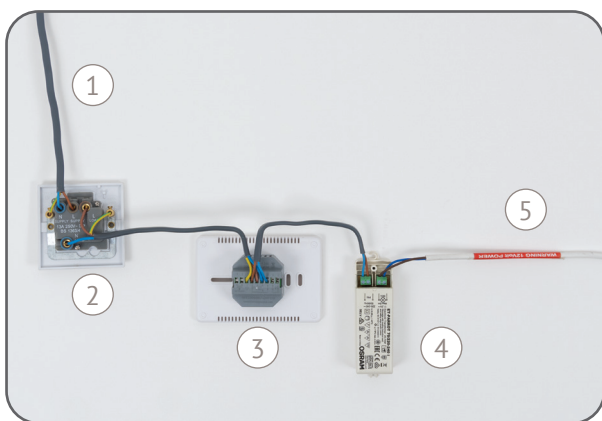
ThermoSphere Vertical Towel Bars operate on 12V AC and must never be connected directly to 230V mains supply.

Ensure that the electrical circuit is safely isolated before carrying out any electrical work.

The wiring example below shows:

1. 230V RCD protected supply.
2. Fused spur with suitably rated fuse - to provide a fuse and isolation point.
3. ThermoSphere Dual Control Thermostat - to provide a timer switch and boost control for the towel bar.
4. Suitably rated 12V transformer - to step down the 230V supply to 12V.
5. 12V power cable to the towel bar.

The transformer must be installed in an accessible area to allow maintenance and replacement if required.



Maximum distance from the towel bar to the transformer is 2m.

The power lead must not be extended as this will reduce the performance of the towel bar.

Multiple towel bars must be wired in parallel. Do not exceed the rated output of your transformer.

Safety Information

ThermoSphere Towel Bars should be installed and tested by a qualified electrician and in accordance with current local regulations. We recommend that the towel bar is installed onto a flat uniform wall, with the bottom at least 600mm from the floor, with a 300mm clearance from permanent fixtures. Where possible, ThermoSphere Vertical Towel Bars should be screwed into solid walls or studs. Fixing directly to plasterboard is not recommended. If fixing to tiled stud walls suitable anchors should be used to ensure rail is secure. Make sure your fixings are suitable for your wall type and will hold the weight of the towel bar and a wet towel.

Please read and understand this installation guide in full before commencing installation. If you have any queries in regards to installation, please call 0800 0195899.

- Observe and adhere to electrical guidelines when placing your ThermoSphere Vertical Towel Bar in wet areas.
- Ensure any timers or switches used are installed in correct zones according to the IP rating of the timer/switch.
- Ensure that your ThermoSphere Vertical Towel Bar is protected by a suitably rated RCD circuit.
- Do not use the towel bar to hold towels or other articles that have been in contact with oil, petroleum based products or dry-cleaning fluids.
- This appliance is intended to warm and dry towels and therefore, is hot to touch so when near young children or infirm persons, close supervision is necessary.

- Do not immerse your ThermoSphere Vertical Towel Bar in liquid.
- Ensure the transformer is located no further than 2m from the ThermoSphere Vertical Towel Bar(s).
- Ensure the transformer is accessible and has adequate ventilation.
- Ensure that multiple towel bars connected to individual Transformers, are wired in parallel to the switch/timer.
- This appliance is not intended for use by persons (including children) with reduced physical, sensory or mental capabilities, or lack of experience and knowledge, unless they have been given supervision or instruction concerning use of the appliance by a person responsible for their safety.
- Children should be supervised to ensure that they do not play with or climb on the appliance.
- If the supply cord is damaged, it must be replaced by the manufacturer, or a skilled and qualified person in order to avoid a hazard.

WARNING: In order to avoid a hazard for very young children, this appliance should be installed so that the base of the bar is at least 600mm above the floor.

Warranty

Thermogroup Ltd T/A ThermoSphere covers all its products with a satisfaction guarantee.

In addition, Thermogroup Ltd will supply a replacement product where a fault is shown to be caused by manufacture, materials or workmanship providing the goods have been installed correctly and according to installation instructions.

This guarantee does not include removal, freight installation or any other associated costs.

Our goods come with guarantees that cannot be excluded under UK Consumer Law.

To utilise the warranty, repair or service the customer must provide a purchase invoice/receipt.

If the product develops a fault within the warranty period due to normal wear and tear, Thermogroup Ltd, at its discretion, will recognise whether it's a faulty product or not.

If it is impossible or not economical for the manufacturer to repair the product, the manufacturer will replace the faulty product with a new unit of the same model or, if there is no stock available of the same model, a new unit of a similar size and specification.

No responsibility can be taken for altered dimensions and lining up of existing holes.

The repair service offered within the warranty period only covers the faults and problems as developed from the manufacturer's errors.

Any damage caused by improper use or carelessness or incorrect wiring is not covered.

Thermogroup Ltd is not responsible for any monetary loss or injuries caused by improper use of this product.

Care Information

The finish of your ThermoSphere Vertical Towel Bar is hard wearing and easy to maintain.

However, any harsh scrubbing, scratching or acid-based cleaning products will damage the surface of your towel bar.

Cleaning with a soft cloth and a non-abrasive cleaning agent will give the best results.

Available models

Code	Finish	Ouput (W)
HTB-VR-900	Diamond Polished Stainless Steel	22
HTB-VR-900-BSS	Brushed Stainless	30
HTB-VR-900-BRB	Brushed Brass	24
HTB-VR-900-BRG	Brushed Gold	30
HTB-VR-900-BRN	Brushed Nickel	24
HTB-VR-900-GM	Gun Metal	30
HTB-VR-900-MBK	Matt Black	30
HTB-VR-900-MWT	Matt White	30
HTB-VR-900-PPK	Pastel Pink	26
HTB-VR-900-PLC	Pastel Lilac	26
HTB-VR-900-PBL	Pastel Blue	26
HTB-VS-900	Diamond Polished Stainless Steel	30
HTB-VS-900-MBK	Matt Black	27
HTB-VP-900	Polished Stainless	20
HTB-VP-900-BSS	Brushed Stainless Steel	20
HTB-VP-900-MBK	Matt Black	25
HTB-VR-900-240	Polished Stainless	20
HTB-VR-900-BSS-240	Brushed Stainless	20
HTB-VR-900-MBK-240	Matt Black	22

ThermoSphere
Bridge House
Pattenden Lane
Marden
Kent
TN12 9QJ
UNITED KINGDOM

www.thermosphere.com
enquiries@thermosphere.com
+44 (0) 800 019 5899



Find us on LinkedIn
Search "ThermoSphere"



Check out our Youtube channel
Search "ThermoSphere underfloor heating"



Find us on Instagram
Search "ThermoSphere"

All content © 2024 Thermogroup Ltd. ThermoSphere is a trading name of Thermogroup Ltd. E&OE