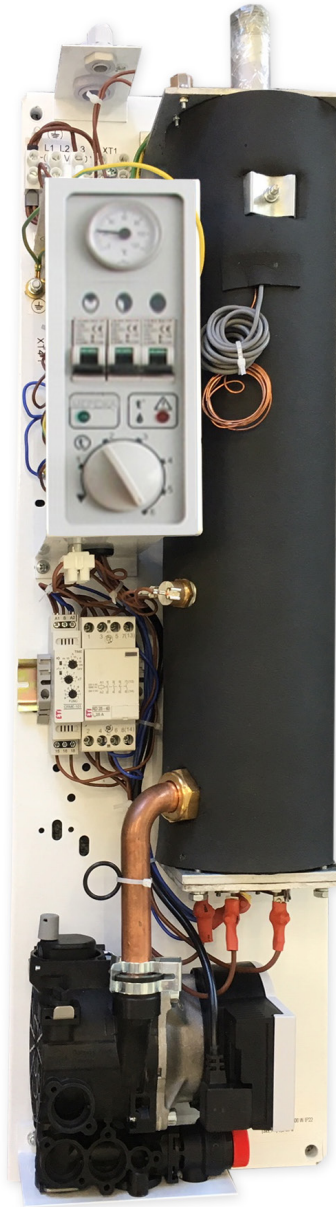


# thermo Sphere

HEATING | WALL | BOILERS



## Efficient water heating for homes without a gas supply

ThermoSphere slimline electric flow boilers provide hot water to central heating systems and wet underfloor heating. Suitable for open vented or pressurised systems. No flue requirement.

## Unique integrated hydraulic pump set

Inside the boiler casing there is an integrated hydraulic group using a high efficiency synchronous pump rated at  $EEL \leq 0,20$  and pressure release valve

## 99% efficient hot water system

With a ThermoSphere Slimline Electric Boilers there is no need for a flue. This makes them unobtrusive, easy to install and eliminates wasted energy

### Technical data

Voltage	230V 50Hz
IEC Protection	Class I
IP Rating	IP22
Efficiency class	<b>D</b>
Max temp	85°C
Max pressure	3 bar
Warranty	2 years

## Slimline Electric Flow Boiler

The new ThermoSphere electric boiler range. The perfect water heating solution for homes without gas supply or where space is at a premium

ThermoSphere slimline electric flow boilers provide hot water to wet central heating systems and underfloor heating. Suitable for open vented or pressurised systems. No flue requirement.

Compact and unobtrusive, ideal for storage cupboards, extensions, loft conversions, conservatories and garages where space is at a premium.

Works with standard central heating radiators, wet underfloor heating manifolds, programmers, room thermostats and thermostatic radiator valves.

Outputs range from 1.5kW to 9.0kW and each boiler features 3 heating elements that can be switched independently.

Three phase 400V, 12Kw and 15Kw models also available to order.

Compliant with EcoDesign directive 2009/125/EU, Regulation (EU) 811/2013, Regulation (EU) 813/2013.

## Packed with energy saving features

- Controllable, efficient central heating
- Integrated pump set and pressure release valve
- Works with standard radiators, programmers, room thermostats and thermostatic radiator valves
- Works with water underfloor heating systems
- Suitable for pressurised or open vented systems
- Domestic hot water in conjunction with indirect cylinder
- No flue or fuel tanks means flexible installation
- 99.8% efficient and EcoDesign Lot20 compliant
- Compact and lightweight for easy installation
- Minimal service and maintenance costs

Feature	TSEB-0450	TSEB-0600	TSEB-0900
Max output (Kw)	4.5 (3 x 1.5 Kw)	6.0 (3 x 2.0 Kw)	9.0 (3 x 3.0 Kw)
Voltage	230	230	230
Current (A)	21	27	40
Working pressure (MPa)	0.2	0.2	0.2
Working pressure (BAR)	2.0	2.0	2.0
Working pressure (PSI)	29	29	29
Max working Temperature (°C)	85	85	85
Cable section 230V (mm <sup>2</sup> )	1.5	2.5	2.5
Weight (Kg)	13	13	13
Dimensions (mm)	745 x 220 x 147	745 x 220 x 147	745 x 220 x 147
Noise level (dB)	49	49	49
Seasonal space heating efficiency (%)	36	36	36
Energy efficiency class	D	D	D
ERP Lot20 Compliant	Yes	Yes	Yes
Warranty duration	2 years	2 years	2 years